

## Attachment 4

### ML 108 Block 1

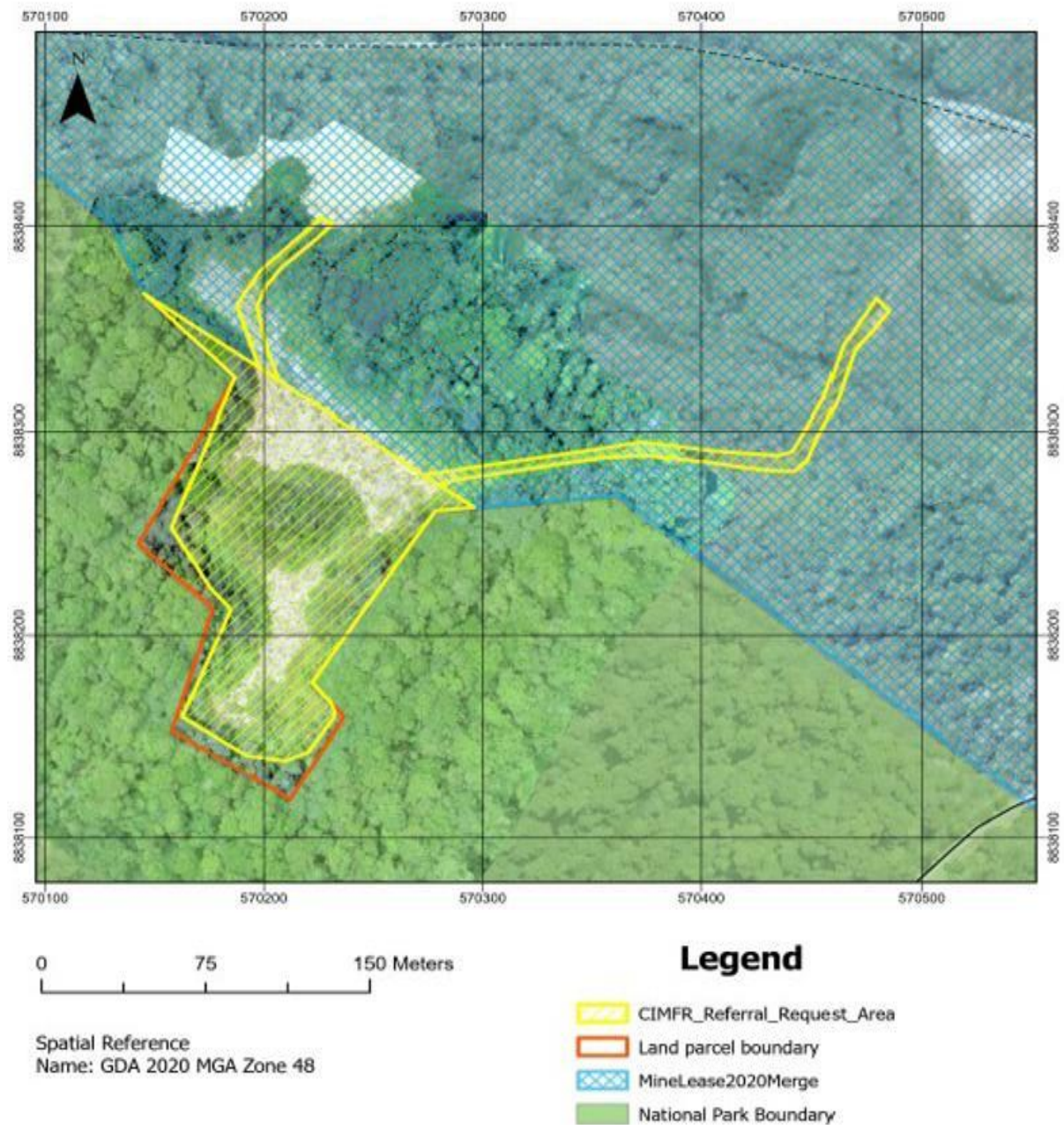


Figure 1: Aerial image of proposed vegetation clearing within previously from CIP relinquished parcel ML 108 Block 1. The top orthomosaic extending over the main boundary but lacking the north-eastern edge of the right access track, is dated 12 of Feb 2025. Underlying and surrounding aerial orthomosaic was taken during a LiDAR survey in 2011.





Figure 2: ML 108 Block 1, looking SE from northwestern corner. The straight SE directing upper parcel boundary starts from viewpoint origin and follows a straight line through the shown person towards the tree line in the background ML108 Block 1 is located to the right of it.



Figure 3: ML108 Block 1, left: looking NE showing a gap in the tree line where northern access track is proposed to be established; right: looking at access track entry from N towards S.





*Figure 4: ML 108 Block 1, looking NNE from southern end and pandanus on the right indicating the eastern boundary and tree line in the back the northern boundary.*



*Figure 5: ML 108 Block 1, looking SSW from centre of parcel.*



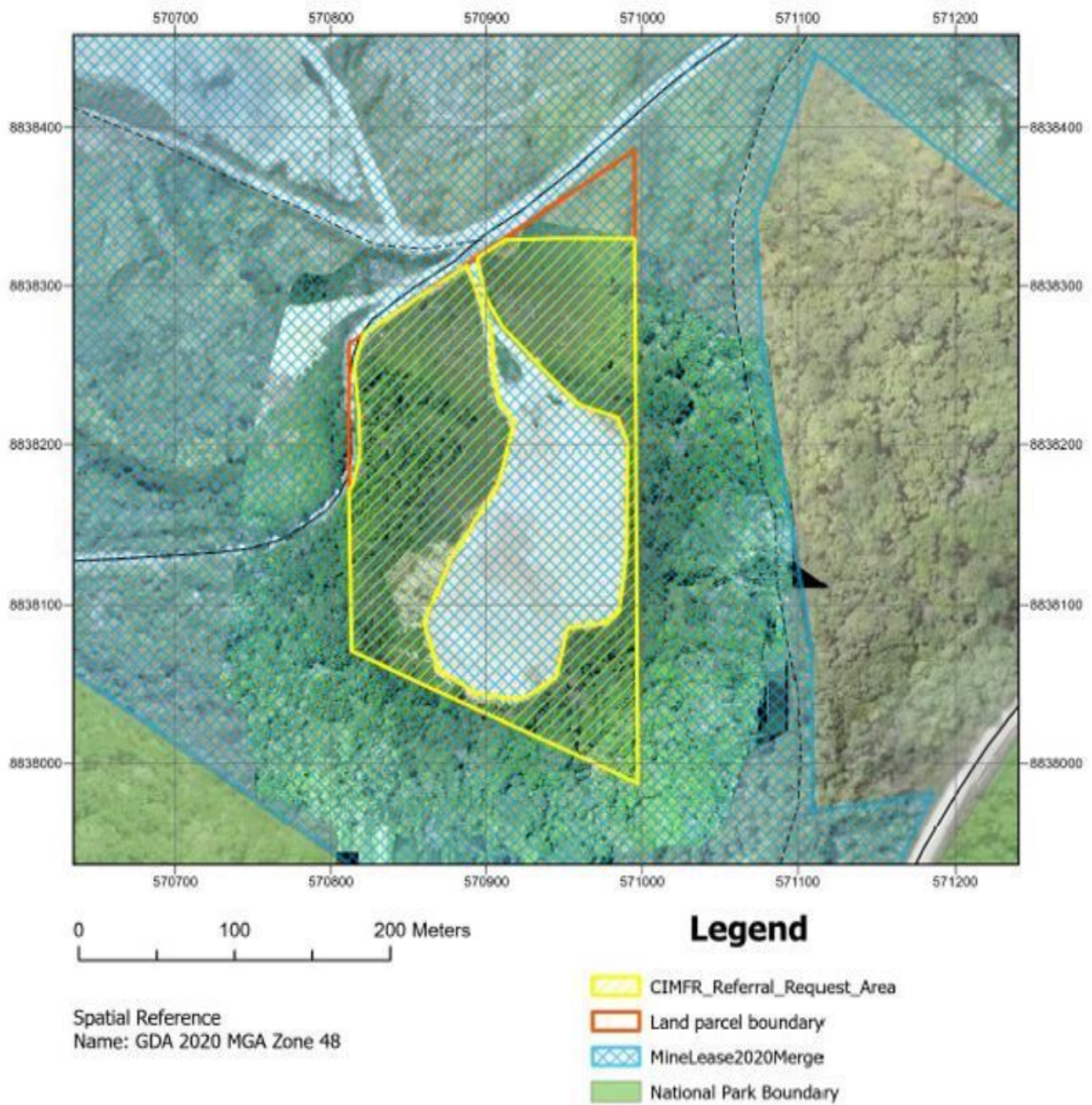
**ML106 Region B**

Figure 6: Aerial image of proposed vegetation clearing within CIP parcel ML 106 B Region, proposed for relinquishment 2025. The top orthomosaic extending over the main boundary is dated 27 of March 2024. Underlying and surrounding aerial orthomosaic was taken during a LiDAR survey in 2011.





*Figure 7: ML 106 B Region, looking SW with weeds on field edge.*



*Figure 8: ML 106 B Region, looking SWW with weeds on top of small onsite stockpile.*



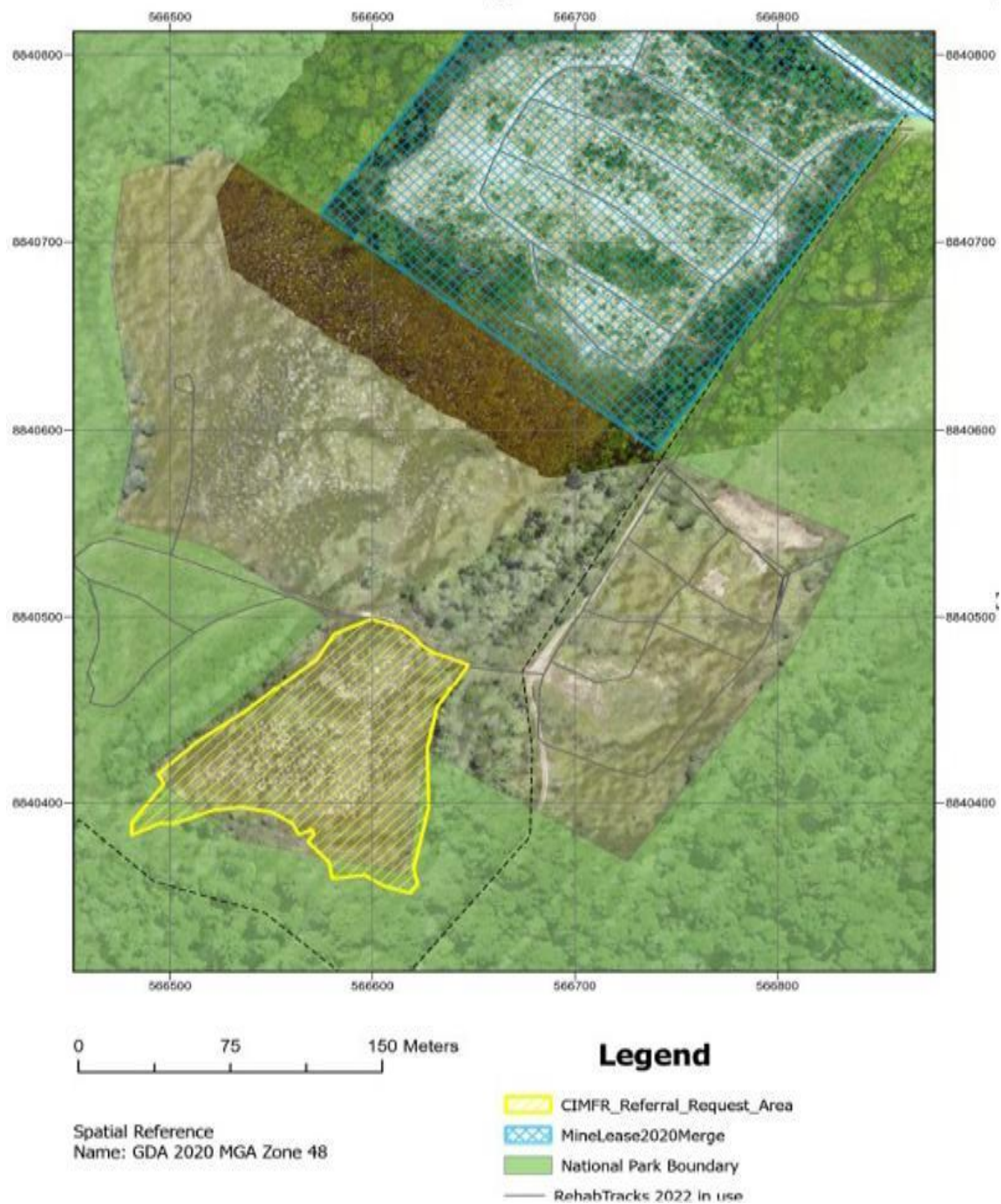
**Field 22 South**

Figure 9: Aerial image of proposed vegetation clearing within an old legacy pinnacle field 22 South, currently unallocated Crownland. B Region, proposed for relinquishment 2025. The top orthomosaic extending over the main boundary is dated 27 of March 2024. Underlying and surrounding aerial orthomosaic was taken during a LiDAR survey in 2011.





*Figure 10: Field 22 South, looking SE.*



*Figure 11: Field 22 South, looking SW.*





*Figure 12: Field 22 South, northern entry point.*





*Figure 13: Soil placement and rehabilitation efforts after clearing of weeds during previous year.*



*Figure 13: Example of Rehab planting efforts in the first Year next to Tropical forest edge on Christmas Island.*