

SCHEME BODY. RETAINING WALL RESTRICTED ZONE EASEMENT		
HV CABLES		
CN53 - 4.00mm ² (3X1x1) CN4.9 - 2.40mm ² (3X1x1) CN4.8 - 185mm ² (3X1x1) CN50 - 95mm ² (3X1x1) CN51 - 50mm ² (3X1x1) CN52 - 50mm ² (1x1) CN4.6 - 35mm ² (3X1x1) CN4.7 - 35mm ² (1x1)		
EXISTING HV CABLES (SIZE AND TYPE INDICATED)		
LV-SL CABLES		
CN4.5 - 240mm ² (1x3x1) CN4.4 - 185mm ² (1x3x1) CN4.3 - 120mm ² (1x3x1) CN4.2 - 25mm ² (1x3x1) CN4.1 - 16mm ² SL (1x1) 4.0 C. PILLOT		
EXISTING LV CABLES (SIZE AND TYPE INDICATED)		
STREET LIGHTS	EXISTING	
<p>* ALPHA CHARACTER DENOTES STREET LIGHT TYPE. REFER STREET LIGHT SCHEDULE FOR POLE & LUMINAIRE DETAILS.</p>		
PILLARS / PITS / ETC		
TRANSFORMER	EXISTING	SWITCHGEAR
AERIAL CONDUCTORS AND POLES		

(A) THIS DRAWING IS TO BE READ IN CONJUNCTION WITH THE WESTERN AUSTRALIAN SERVICE AND INSTALLATION REQUIREMENTS.

(B) CUSTOMER MUST COMPLY WITH POWER QUALITY LIMITS AS PER SA/SNZ TS IEC 61000.3.5 AND WESTERN POWER TECHNICAL REQUIREMENTS.

(C) CUSTOMER TO PEG THE POSITION OF NEW STREETLIGHTS IN ACCORDANCE WITH AS1588 AND SPECIFIC REQUIREMENTS FROM LGA AND/OR ROAD AUTHORITY AT NO COST TO WESTERN POWER.

(D) CUSTOMER IS RESPONSIBLE TO CHECK STREETLIGHT LOCATION TO MAKE SURE IT IS CLEAR FROM OTHER UTILITY ASSETS.

(E) THREATENED-PRIORITY ECOLOGICAL COMMUNITIES:
THE CUSTOMER IS RESPONSIBLE FOR UNDERTAKING ALL SURVEYS REQUIRED TO CONFIRM THE PRESENCE OR ABSENCE OF THREATENED OR PRIORITY ECOLOGICAL COMMUNITIES, AND FOR OBTAINING THE RELEVANT APPROVALS TO CLEAR TIES/PI IF REQUIRED. ALL SURVEYS AND APPROVALS SHALL BE PROVIDED TO WESTERN POWER PRIOR TO THE COMMENCEMENT OF WORKS.

(F) ABORIGINAL HERITAGE:
THE WORKS ARE LOCATED WITHIN A REGISTERED ABORIGINAL HERITAGE PLACE (A DIRECTORY PLACE 3525 - ELLENBOORUP UPPER SWAN). IT IS THE CUSTOMER'S RESPONSIBILITY TO COMPLETE THEIR OWN DUE DILIGENCE ASSESSMENT AND PROVIDE WESTERN POWER WITH THE EVIDENCE OF SURVEYS/CONSULTATIONS AND APPROVALS (WHERE APPLICABLE) PRIOR TO THE COMMENCEMENT OF WORKS.

- ① INSTALL 4 x NEW 10.5m SINGLE OUTREACH 70W LED STREETLIGHT SLO1, SLO2, SLO3, SLO4 AS PER CUSTOMER PEGGED LOCATION.
CU: SL9_4E x 4
DCSH: S09
- ② INSTALL NEW UMS PIT (UM1) AT THE BASE OF THE PROPOSED STREETLIGHT POLE SLO1.
CU: UM4 x 1
DCSH: U23-3
- ③ INSTALL NEW 25LV CABLE FROM EXISTING 240 LV CABLE (CABLE PICK ID (C9825372) TO NEW UMS PIT (UM1) AS PER DESIGN DRAWING.
CU: CN42 x 30m, CN73_LV25 x 3, CN54 x 3
- ④ INSTALL NEW 16SL CABLE FROM NEW UMS PIT (UM1) TO NEW STREETLIGHT POLE SLO1 AS PER DESIGN DRAWING.
CU: CN41 x 20m, CN73_LV10/16 x 3, CN54 x 1
- ⑤ INSTALL NEW 16SL CABLE FROM NEW STREETLIGHT POLE SLO1 TO NEW STREETLIGHT POLE SLO2 AS PER DESIGN DRAWING.
CU: CN41 x 60m, CN73_LV10/16 x 3, CN54 x 4
- ⑥ INSTALL NEW UMS PIT (UM2) AT THE BASE OF THE PROPOSED STREETLIGHT POLE SLO3.
CU: UM4 x 1
DCSH: U23-3
- ⑦ INSTALL NEW 25LV CABLE FROM EXISTING POLE S348185 TO NEW UMS PIT (UM2) AS PER DESIGN DRAWING.
CU: CN42 x 35m, CN73_LV25 x 3, CN54 x 3
- ⑧ INSTALL NEW 16SL CABLE FROM NEW UMS PIT (UM2) TO NEW STREETLIGHT POLE SLO3 AS PER DESIGN DRAWING.
CU: CN41 x 20m, CN73_LV10/16 x 3, CN54 x 1
- ⑨ INSTALL NEW 16SL CABLE FROM NEW STREETLIGHT POLE SLO3 TO NEW STREETLIGHT POLE SLO4 AS PER DESIGN DRAWING.
CU: CN41 x 65m, CN73_LV10/16 x 3, CN54 x 6
- ⑩ TEE JOINT NEW 25LV CABLE WITH EXISTING 240 LV CABLE (CABLE PICK ID (C9825372) CU: LU5 x 1
- ⑪ TERMINATE NEW 25LV CABLE INTO NEW UMS PIT (UM1) AND NEW UMS PIT (UM2) AS PER DESIGN DRAWING.
DCSH: U23-3
- ⑫ TERMINATE NEW 16SL CABLE ONTO NEW STREETLIGHT POLE SLO1 AND NEW STREETLIGHT POLE SLO3.
NON CU: FE0032 x 4, FE0071 x 4
DCSH: R26, R27
- ⑬ TERMINATE NEW 25 LV CABLE INTO EXISTING POLE (PICK ID S348185) AS PER DESIGN DRAWING.
CU: LU51_25ALO x 1, LU51_25ALU x 1
DCSH: U19-2, U23-1
- ⑭ TERMINATE NEW 16SL CABLE ONTO NEW UMS PIT (UM1) AND NEW UMS PIT (UM2).
NON CU: FE0032 x 1, FE0071 x 1
DCSH: R26, R27
- ⑮ TERMINATE NEW 16SL CABLE INTO NEW STREETLIGHT POLES SLO1, SLO2, SLO3 SLO4.
NON CU: FE0032 x 8, FE0071 x 8
DCSH: R26, R27
- ⑯ ENVIRONMENTAL FILTER CHECKED.

THE FOLLOWING ENVIRONMENTAL ISSUE HAVE BEEN IDENTIFIED FOR THIS PROJECT. ALL RELEVANT PERMITS/PROCEDURE MUST BE OBTAINED/ADHERE TO:
ACID SULFATE SOILS - DRAINAGE:

THE WORKS INTERSECT AN AREA MAPPED AS AN "ACID SULFATE SOIL - MODERATE TO LOW RISK".
THE GROUNDWATER AT THIS SITE IS SHALLOW. NO DEWATERING IS PERMITTED WITHOUT AN ACID SULFATE SOILS & DEWATERING MANAGEMENT PLAN BEING IN PLACE AND COMPLIANCE WITH THE EXCAVATION AND TRENCHING PROCEDURE (EDM 4374.0956).

PLEASE REFER TO THE ENVIRONMENTAL ADVICE # EDM 7016167 FOR MORE INFORMATION.


PCASE ID:	PCASE ID - ORIGINATOR(S) (999994250)
5121	512171000
5122	512171005
5123	512171007
5124	512171001
5125	512171004
5126	512171006


STREET LIGHT SCHEDULE				
TYPE	DESCRIPTION	COLOUR	CU'S	QTY
A	10.5M WP STANDARD 70W LED SOR	STEEL STD	SL9_4E	4

					SHE ASSESSMENT REPORT EDM#: 70696404
A	ISSUED FOR CONSTRUCTION	F.Z.	02/25		HAZARD MANAGEMENT REGISTER EDM#: 70687348
Rev.	REVISIONS	DRN	DATE		REFERENCE FILE DETAILS

INTERSECTION OF COLOMBARD LANE & HERMITAGE DRIVE AND MUSCAT TCE & HERMITAGE DRIVE, THE VINES

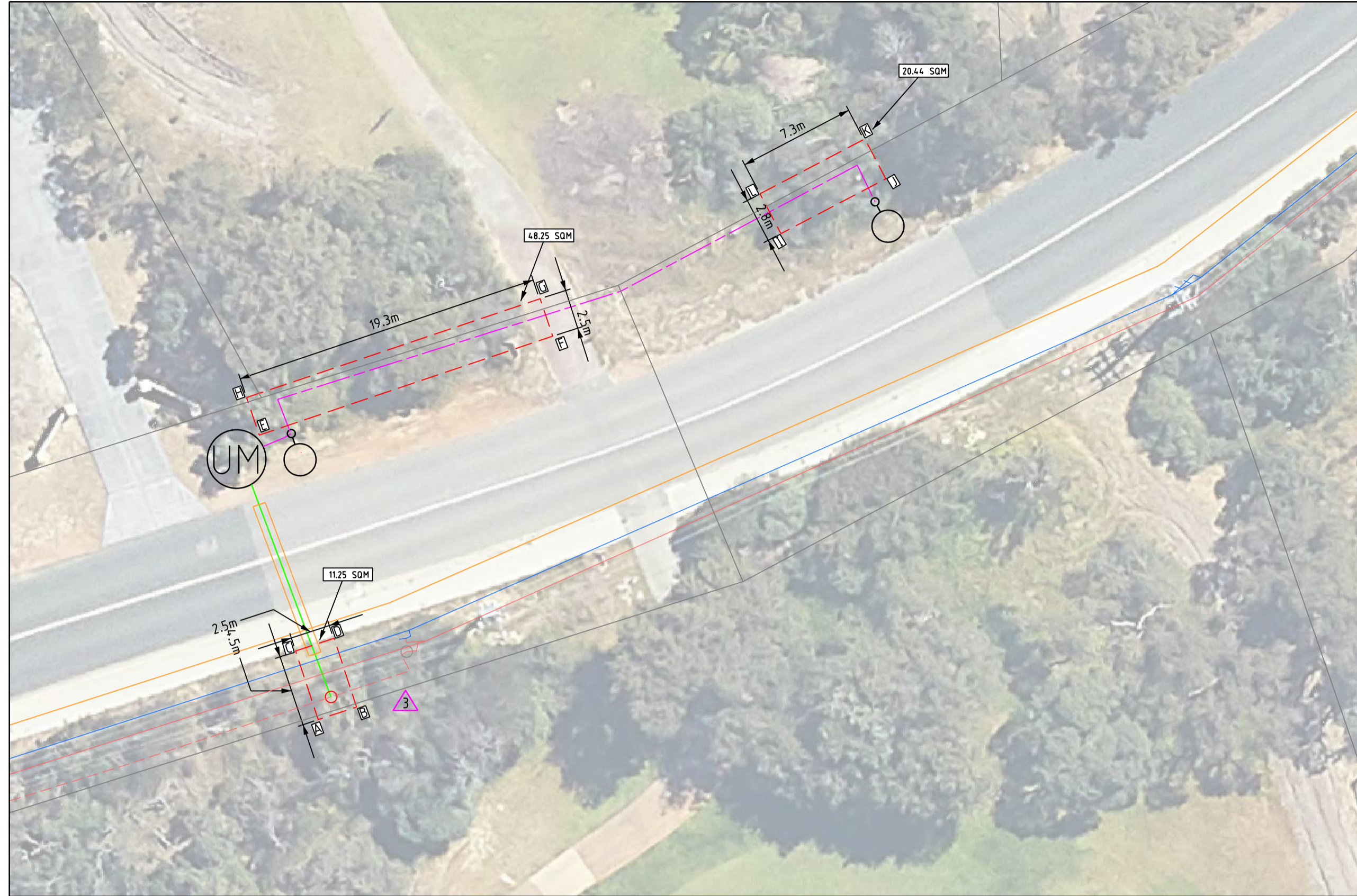
DESIGN DRAWING

DESIGNER: CUSTOMER CONNECTION DESIGN		 westernpower	
DESIGN TEAM: CCS SBM QAT - APD		DRAWING NUMBER	
EMAIL: CCS.SBM.QAT@WESTERNPOWER.COM.AU			
TEL:	13 10 87	<div style="font-size: 2em; font-weight: bold;">MP211537</div>	
DATE: 02/25	SCALE: AS NOTED @ A1		
GEO REF: Lat. = 31°45'40" S Long. = 116°0'42" E			
		REV: A	ORIGINAL SIZE - A1

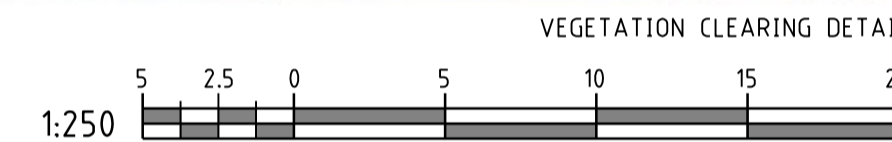
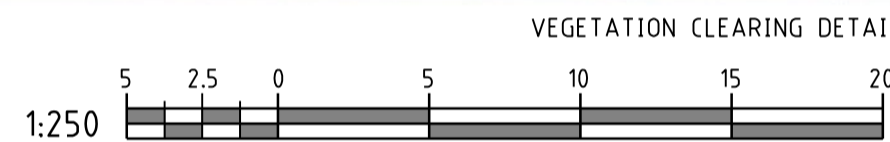



NO DESIGN CHANGES

GOLDEN SAFETY RULES: ARE INDICATIVE ONLY - ALWAYS PERFORM A DETAILED HAZARD ANALYSIS.



LEGEND	
SCHEME B.O.Y.	
RETAINING WALL	
RESTRICTED ZONE	
EASEMENT	
HV CABLES	
CN53 - 400mm2 (3X1c)	
CN47 - 240mm2 (3X1c)	
CN48 - 185mm2 (3X1c)	
CN50 - 95mm2 (3X1c)	
CN51 - 50mm2 (3X1c)	
CN51 - 50mm2 (1c)	
CN46 - 35mm2 (3X1c)	
CN47 - 35mm2 (1c)	
EXISTING HV CABLES	
(SIZE AND TYPE INDICATED)	
LV-SL CABLES	
CN45 - 240mm2 (1x3c)	
CN44 - 185mm2 (1x3c)	
CN43 - 120mm2 (1x3c)	
CN42 - 25mm2 (1x3c)	
CN41 - 16mm2 SL (1c)	
4.0 C PILOT	
EXISTING LV CABLES	
(SIZE AND TYPE INDICATED)	
STREET LIGHTS	EXISTING
<p># - ALPHA CHARACTER DENOTES STREET LIGHT TYPE. REFER STREET LIGHT SCHEDULE FOR POLE & LUMINAIRE DETAILS.</p>	
PILLARS / PITS / ETC	
Serviced Unearthed De-energised Lot	
TRANSFORMER	EXISTING SWITCHGEAR
AERIAL CONDUCTORS AND POLES	
	EXISTING POLE (ANY TYPE AS INDICATED)
	EXISTING POLE (ANY TYPE AS INDICATED)
	EXISTING AERIAL CONDUCTORS (SIZE AND TYPE INDICATED)



REGISTRATION BALANCE ESTIMATES (6/30/2020)		
REGID	FEE DEDUCTIONS	
	EASTING	NORTHING
A	406432.55	406437.03
B	406434.96	406437.13
C	406431.15	406437.11
D	406432.55	406437.11
E	406432.55	406437.13
F	406437.22	406437.13
G	406434.55	406437.13
H	406432.55	406437.13
I	406431.15	406437.03
J	406432.55	406437.13
K	406432.55	406437.13
L	406432.55	406437.13
M	406431.15	406437.13
N	406432.55	406437.13
O	406431.15	406437.13
P	406432.55	406437.13
Q	406432.55	406437.13
R	406432.55	406437.13
S	406432.55	406437.13
T	406432.55	406437.13
U	406432.55	406437.13
V	406432.55	406437.13
W	406432.55	406437.13
X	406432.55	406437.13
Y	406432.55	406437.13
Z	406432.55	406437.13
AA	406432.55	406437.13
AB	406432.55	406437.13
AC	406432.55	406437.13
AD	406432.55	406437.13
AE	406432.55	406437.13
AF	406432.55	406437.13
AG	406432.55	406437.13
AH	406432.55	406437.13
AI	406432.55	406437.13
AJ	406432.55	406437.13
AK	406432.55	406437.13
AL	406432.55	406437.13
AM	406432.55	406437.13
AN	406432.55	406437.13
AO	406432.55	406437.13
AP	406432.55	406437.13
AQ	406432.55	406437.13
AR	406432.55	406437.13
AS	406432.55	406437.13
AT	406432.55	406437.13
AU	406432.55	406437.13
AV	406432.55	406437.13
AW	406432.55	406437.13
AX	406432.55	406437.13
AY	406432.55	406437.13
AZ	406432.55	406437.13
BA	406432.55	406437.13
BB	406432.55	406437.13
BC	406432.55	406437.13
BD	406432.55	406437.13
BE	406432.55	406437.13
BF	406432.55	406437.13
BG	406432.55	406437.13
BH	406432.55	406437.13
BI	406432.55	406437.13
BJ	406432.55	406437.13
BK	406432.55	406437.13
BL	406432.55	406437.13
BM	406432.55	406437.13
BN	406432.55	406437.13
BO	406432.55	406437.13
BP	406432.55	406437.13
BQ	406432.55	406437.13
BR	406432.55	406437.13
BS	406432.55	406437.13
BT	406432.55	406437.13
BU	406432.55	406437.13
BV	406432.55	406437.13
BW	406432.55	406437.13
BX	406432.55	406437.13
BY	406432.55	406437.13
BZ	406432.55	406437.13
CA	406432.55	406437.13
CB	406432.55	406437.13
CC	406432.55	406437.13
CD	406432.55	406437.13
CE	406432.55	406437.13
CF	406432.55	406437.13
CG	406432.55	406437.13
CH	406432.55	406437.13
CI	406432.55	406437.13
CJ	406432.55	406437.13
CK	406432.55	406437.13
CL	406432.55	406437.13
CM	406432.55	406437.13
CN	406432.55	406437.13
CO	406432.55	406437.13
CP	406432.55	406437.13
CQ	406432.55	406437.13
CR	406432.55	406437.13
CS	406432.55	406437.13
CT	406432.55	406437.13
CU	406432.55	406437.13
CV	406432.55	406437.13
CW	406432.55	406437.13
CX	406432.55	406437.13
CY	406432.55	406437.13

(A) VEGETATION

THE CUSTOMER IS RESPONSIBLE FOR OBTAINING ALL NECESSARY CLEARING APPROVALS AND, PRIOR TO WESTERN POWER COMMENCING WORKS, THE CUSTOMER IS REQUIRED TO PROVIDE A COPY OF EITHER:

- 1A. CLEARING PERMIT ISSUED IN THE CUSTOMER'S NAME; OR
- 1B. A WRITTEN DETERMINATION NOT REQUIRED BY DWER CONFIRMING A CLEARING PERMIT IS NOT REQUIRED BY THE CUSTOMER; OR
- 2. WRITTEN DETAILS OF A RELEVANT CLEARING PERMIT EXEMPTION AND SUPPORTING DOCUMENTATION (REGULATORY APPROVALS).

CORRESPONDING POWER EXEMPTION CLEARING LETTER EDM 64167597) THIS ALSO INCLUDES RELEVANT DEVELOPMENT APPROVALS FOR THE WORKS (I.E. BUILDING APPROVALS FOR A STRUCTURE THAT REQUIRES APPROVAL).

THE CUSTOMER'S APPROVAL DOCUMENTS MUST BE SENT TO THE SECT ENVIRONMENT TEAM VIA ENVIRONMENT@WESTERNPOWER.COM.AU FOR REVIEW AND SUITABILITY CONFIRMATION. ALLOW TO BUSINESS DAYS FOR ENVIRONMENT TEAM TO REVIEW, TO ENABLE THE CUSTOMER TO OBTAIN CLEARING APPROVALS, THE CUSTOMER PROVIDE WITHIN 10 BUSINESS DAYS OF THE DATE OF THE SHEET OF THE VEGETATION CLEARING REQUIRED (VEGETATION CLEARING REQUIREMENTS TEMPLATE EDM 50997884) AND ANY PHOTOS OR GIS SHAPEFILES, SHOWING THE EXACT LOCATION(S) WHERE CLEARING IS REQUIRED.

REFUSE TO CLEARING PERMIT WORK INSTRUCTION (EDM 43538228) FOR FURTHER DETAILS

NO NATIVE VEGETATION MAY BE DISTURBED WITHOUT A PERMIT OR OUTSIDE OF THE PERMIT AREA. IF IN DOUBT, PLEASE CONTACT THE RELEVANT MANAGER WHO WILL CONTACT WESTERN POWER ENVIRONMENTAL TEAM.

PLEASE NOTE: HEAVY PENALTIES MAY APPLY TO INDIVIDUALS AND BUSINESSES FOR DAMAGE TO NATIVE VEGETATION WITHOUT A PERMIT

THIS DRAWING TO BE READ IN CONJUNCTION
WITH SHEET 1

VENDOR CONTACT DETAILS

COMPANY NAME: APD ENGINEERING
REFERENCE NO: W_APD08400.01
CONTACT: FATEMATUZ ZUHRA TEL: (08) 9212 1500

CUSTOMER CONTACT DETAILS

CONTACT NAME: JONATHAN LE
REFERENCE NO: WS-527475V9Z8 TEL: 0892679238

CRITICAL WATER PIPELINE
IN VICINITY OF WORKS

ISSUED FOR CONSTRUCTION

STREETLIGHT INSTALLATION

NETWORK VOLTAGE: 22kV/415V

INTERSECTION OF COLOMBARD LANE & HERMITAGE DRIVE AND MUSCAT TCE & HERMITAGE DRIVE, THE VINES

DESIGN DRAWING

DESIGNER: CUSTOMER CONNECTION DESIGN

DESIGN TEAM: CCS SBM QAT - APD

EMAIL: CCS.SBM.QAT@WESTERNPOWER.COM.AU

TEL: 13 10 87

DATE: 02/25	SCALE: AS NOTED @ A1
-------------	----------------------

GEO REF: Lat. - 31°45'40" S

westernpower

RAWING NUMBER

MP211537

EV: A	ORIGINAL SIZE - A1
-------	--------------------

A	ISSUED FOR CONSTRUCTION	F.Z.	02/25	SHE ASSESSMENT REPORT EDM#: 70696404 HAZARD MANAGEMENT REGISTER EDM#: 70687348	
Rev.	REVISIONS	ORN	DATE	REFERENCE FILE DETAILS	