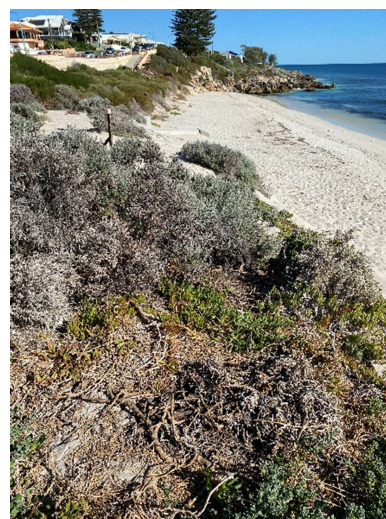


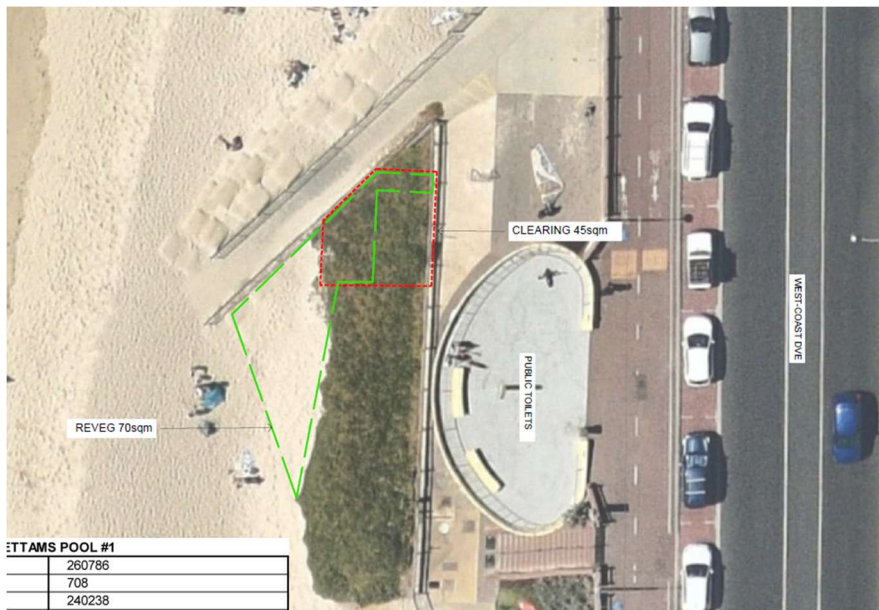


Watermans Bay North (L01)

Species: *Rhagodia baccata*, *Scaevola crassifolia*, *Olearia axillaris*, *Spinifex longifolius*.

Condition: Very good



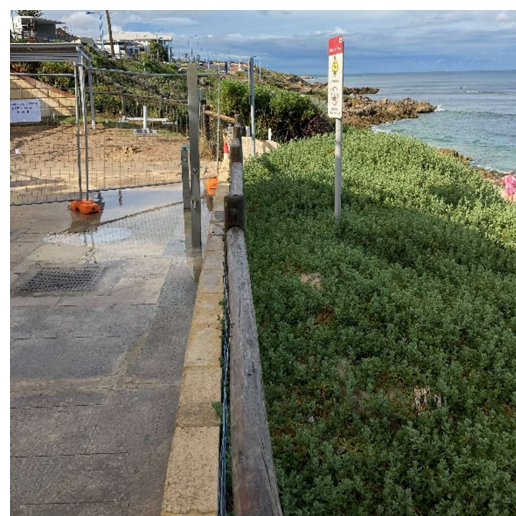


Mettams Pool #1 (L02)

Species: *Tetragonia decumbens*.

Condition: Very poor

Site removed from application due to confirmation from the City of Stirling that there is no presence or clearing of native vegetation taking place in this area.

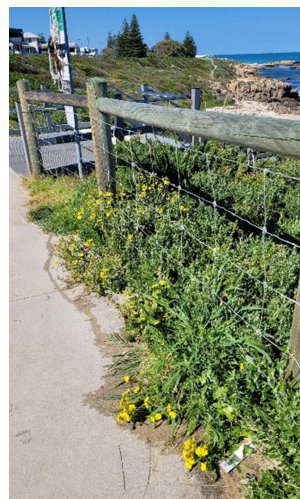
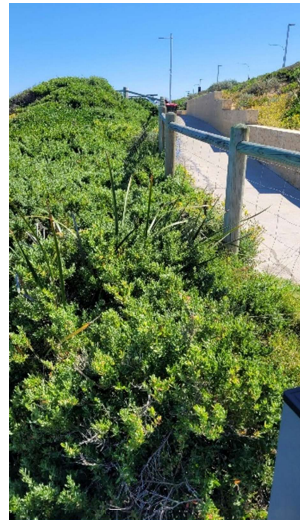
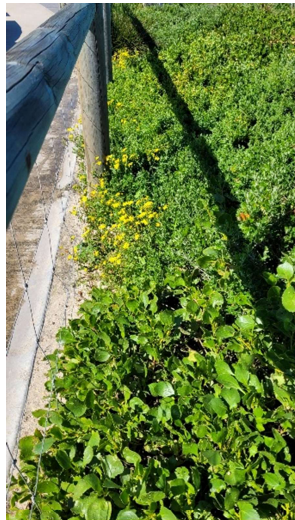




Mettams Pool #2 (Bennion Beach, L03)

Species: *Rhagodia baccata*, *scaevola crassifolia*, *Enchylaena tomentosa*, *ficinia nodosa*, *spinifex longifolius*.

Condition: Very good





Trigg Beach (L04)

Vegetation profile from north to south.

Section 1

Species: *Rhagodia baccata*, *Scaevola crassifolia*, *Spinifex longifolius*, *Olearia axillaris*, *Threlkeldia diffusa*.

Minor vegetation removal as the section is dominated by invasive species.

Condition: Poor

Section 2

Species: *Atriplex isatidea*, *rhagodia baccata*, *Scaevola crassifolia*, *Spinifex longifolius*, *Olearia axillari*.

Condition: Good

Section 3

Species: *Myoporum insulare*, *Rhagodia baccata*, *Scaevola crassifolia*.

Condition: Very good



