

# Memo

## Jarrahdale Railbikes - Clearing Assessment

**Prepared For:** Jarrahdale Railbikes Group Inc.  
**Project Name:** Clearing Assessment for the proposed Railbike Track  
**Date:** 07 November 2025



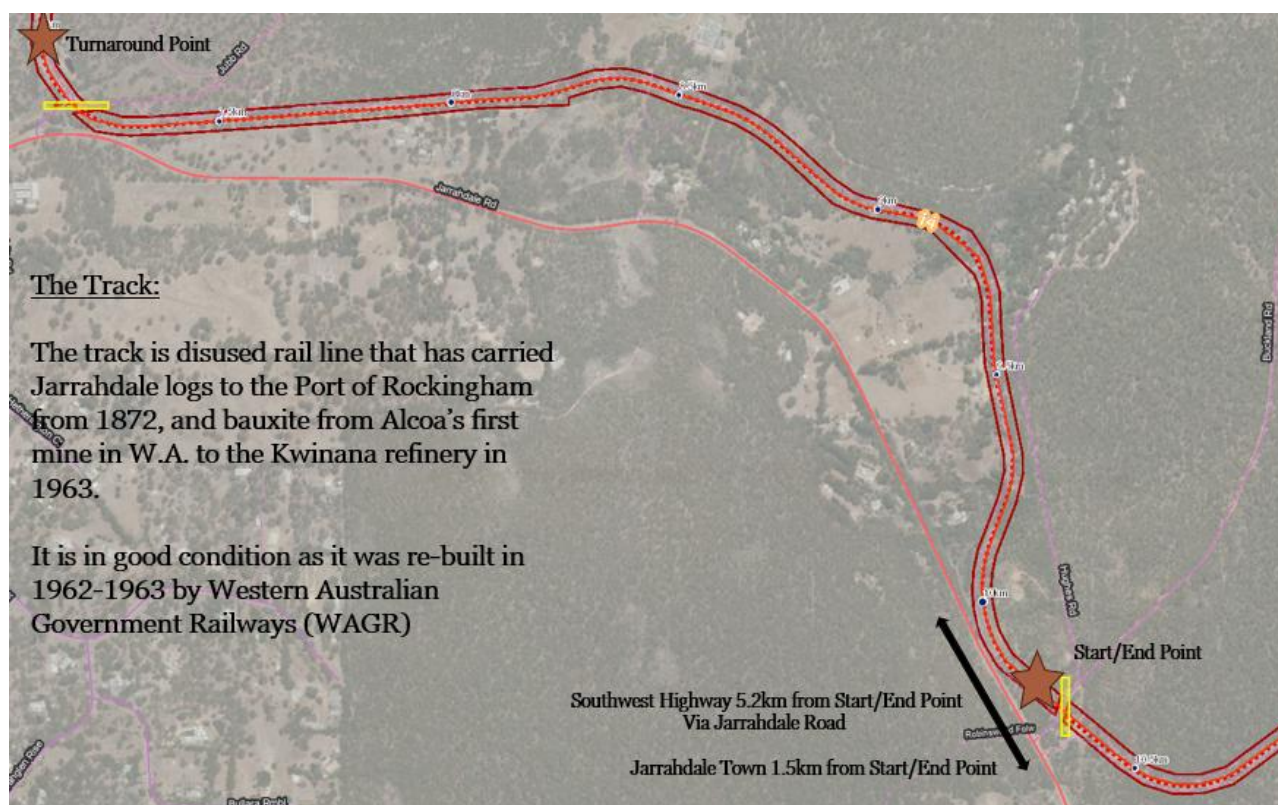
### 1. Introduction

The Jarrahdale Railbikes Group Inc. is proposing to create a unique, safe railbike experience on a portion of the disused Jarrahdale rail line, from Buckland Rd to just west of Jubb Rd. 1.5 km from the heart of Jarrahdale. The project is referred to as the Jarrahdale Railbikes.

The Jarrahdale rail line, a private timber railway, initially carried logs from the Jarrahdale timber mill to the Port of Rockingham for export starting in 1872. In 1893, the Western Australian Government Railways (WAGR) South West Railway from Perth to Bunbury was opened, and consequently use of the Jarrahdale rail line dwindled with part of the line removed in 1950. The Jarrahdale to Mundijong line remained in operation until November 1962. This section of railway is still in place and maintained by Arc Infrastructure.

The Jarrahdale Railbikes will be a tourist attraction, providing reliable income source for the Jarrahdale Community Collective and other like-minded voluntary, not for profit groups. It will enable support for other private businesses in and around Jarrahdale, as well as offer opportunities for the youth to be involved. The Shire of Jarrahdale-Serpentine has given their support for this project.





that are still vegetated but where the composition and structure are dominated by weeds, or areas where most of the native vegetation has been removed.

### 3.1. Flora

The proposed railbike track has a well-constructed railway line that has been maintained by the present operator Arc Infrastructure to remain clear of all vegetation on the actual railway line (Figure 2). However, following inspections it was observed that maintenance in some parts of the track has not been occurring. In these locations the following *Acacia* species, which are alien to Western Australia are thriving. These are *Acacia decurrens*, *Acacia iteaphylla*, *Acacia longifolia* and *Acacia podalyriifolia*. Mixed in with these species is a significant number of other alien (weed) species (Figure 3).

There is a location along the line that *Eucalyptus camaldulensis* saplings have grown through the railway line. This species is not native to the Jarrah Forest and can be invasive (Figure 4). There are very few native species occurring on the edge of the railway line, the majority of which are juveniles and are currently out competed by the non-native alien species.

### 3.2. Fauna

The Jarrahdale area is home to a significant number of native fauna. The railbikes will provide the opportunity for members of the community and tourists alike to learn about these as part of the tour. The Marri (*Corymbia calophylla*) is the dominant upper story on each side of the rail line. There is a significant number of large trees, many with hollows that can support the two species of Cockatoos that are seen along the rail line easement. There are no plans or necessity to remove or trim any of these habitat trees. The Red-tailed Black Cockatoo (*Calyptrorhynchus banksia*) is common in the rail line easement along with the Carnaby's Black-Cockatoo (*Zanda latirostris*) that was seen in the area during the assessment. The Western Grey Kangaroo (*Macropus fuliginosus*) is also a frequent visitor to the area. The project will have no significant impact on these species. Reptiles are well represented in the corridor with a King Skink (*Egernia kingii*) and Common Death Adder (*Acanthophis antarcticus*) sighted during the assessment.

The rail line easement forms a corridor for native fauna to egress along. Maintaining the track will ensure the fauna species are able to use this and be present whilst the railbike tours are happening thus making it possible that these species may be sighted from the railbikes.

### 3.3. Aboriginal Cultural Heritage.

Being on the margin of the Gnaala Karla Booja and Whadjuk territories, the traditional owners used to harmoniously interact for cultural reasons, trade and ceremonies. This is a unique point that should be shared. Too often we hear of violent ownership of land. We offer the opportunity to discuss the peaceful and congeniality of the Jarrahdale First Australians. The Jarrahdale Railbike Group Inc. is

very keen to work with the Traditional Owners to bring this project to be part of the community. There is an opportunity to improve the damage done along this track easement since it was cleared in 1872 and work with Aboriginal rangers on Country.



**Figure 2: Railway line clear of vegetation**



**Figure 3: Overgrown sections of the line dominated by alien Acacia species**



**Figure 4: Eucalyptus camaldulensis saplings**



**Figure 5: Common Death Adder in the survey area**

## Disclaimer

This document and its contents are to be treated as confidential and are published in accordance with and subject to an agreement between Botanica Consulting (BC) and the client for whom it has been prepared and is restricted to those issues that have been raised by the client in its engagement of BC. Neither this document nor its contents may be referred to or quoted in any manner (report or other document) nor reproduced in part or whole by electronic, mechanical or chemical means, including photocopying, recording or any information storage system, without the express written approval of the client and/or BC.

This document and its contents have been prepared utilising the standard of care and skill ordinarily exercised by Environmental Scientists in the preparation of such documents. All material presented in this document is published in good faith and is believed to be accurate at the time of writing. Any person or organisation who relies on or uses the document and its contents for purposes or reasons other than those agreed by BC and the client without primarily obtaining the prior written consent of BC, does so entirely at their own risk. BC denies all liability in tort, contract or otherwise for any loss, damage or injury of any kind whatsoever (whether in negligence or otherwise) that may be endured as a consequence of relying on this document and its contents for any purpose other than that agreed with the client.

## Quality Assurance

An internal quality review process has been implemented to each project task undertaken by BC. Each document and its contents is carefully reviewed by core members of the Consultancy team and signed off at Director Level prior to issue to the client. Draft documents are submitted to the client for comment and acceptance prior to final production.

**Prepared by:** Jim Williams  
Director  
Botanica Consulting