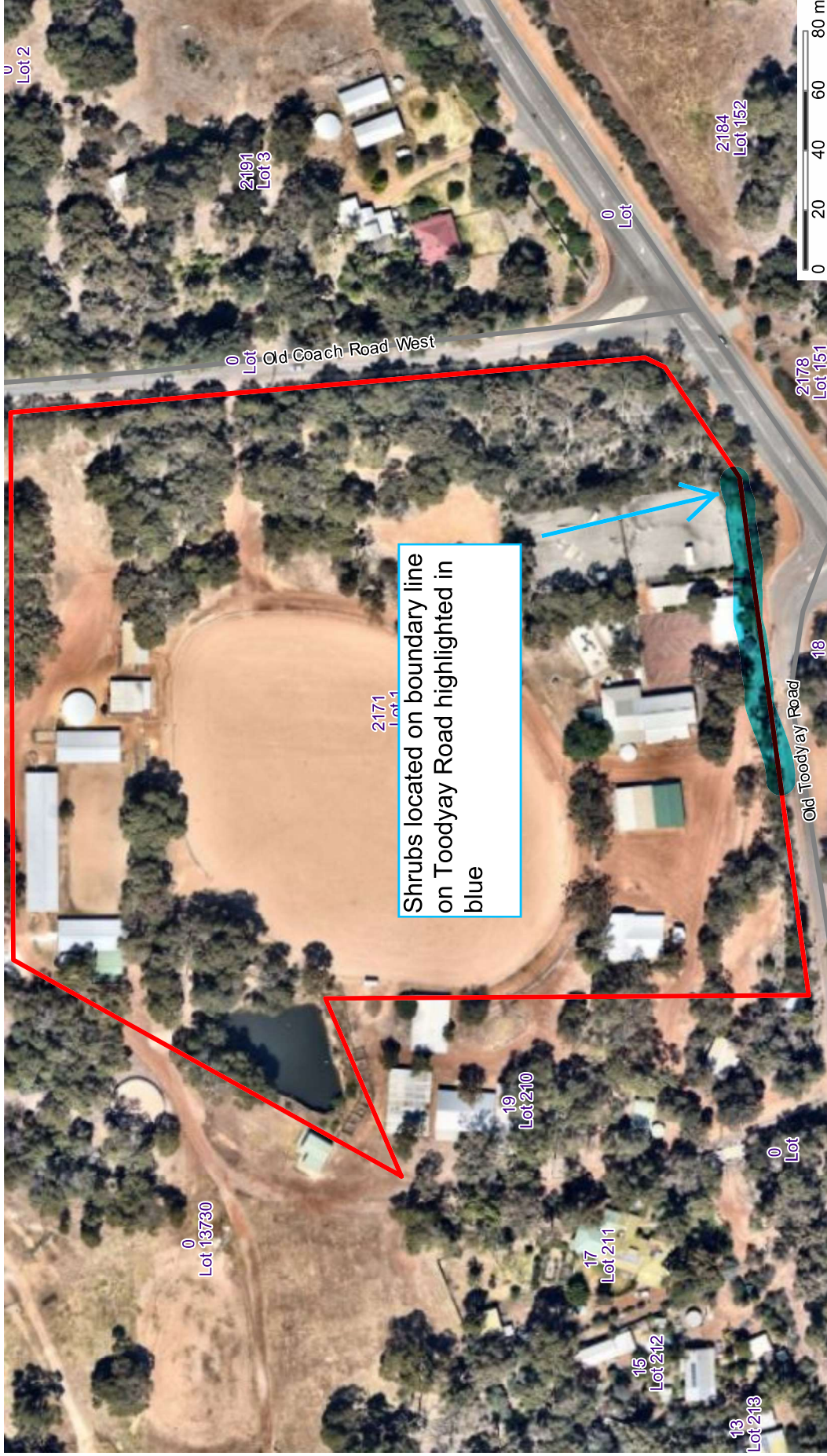
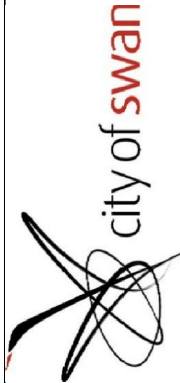


REF 9568/1 - Supporting documentation - Proposed Clearing area



Shrubs located on boundary line on Toodyay Road highlighted in blue



DISCLAIMER: Information shown here on is a composite of information from various different data sources. Users are warned that the information is provided by the City of Swan in this format as a general resource on the understanding that it is not suitable as a basis for decision making without verification with the original source.

17/01/2022

1:2000

