



Information to support clearing permit application

Swan Valley SGIP

Various drilling sites across the Swan Valley

Location

The proposed drilling sites are within the City of Swan Local Government Authority (Figure 1) in the Swan Valley area. They comprise 11 sites however it is expected that only 3 may impact vegetation (SV3, SV4 and SV8).

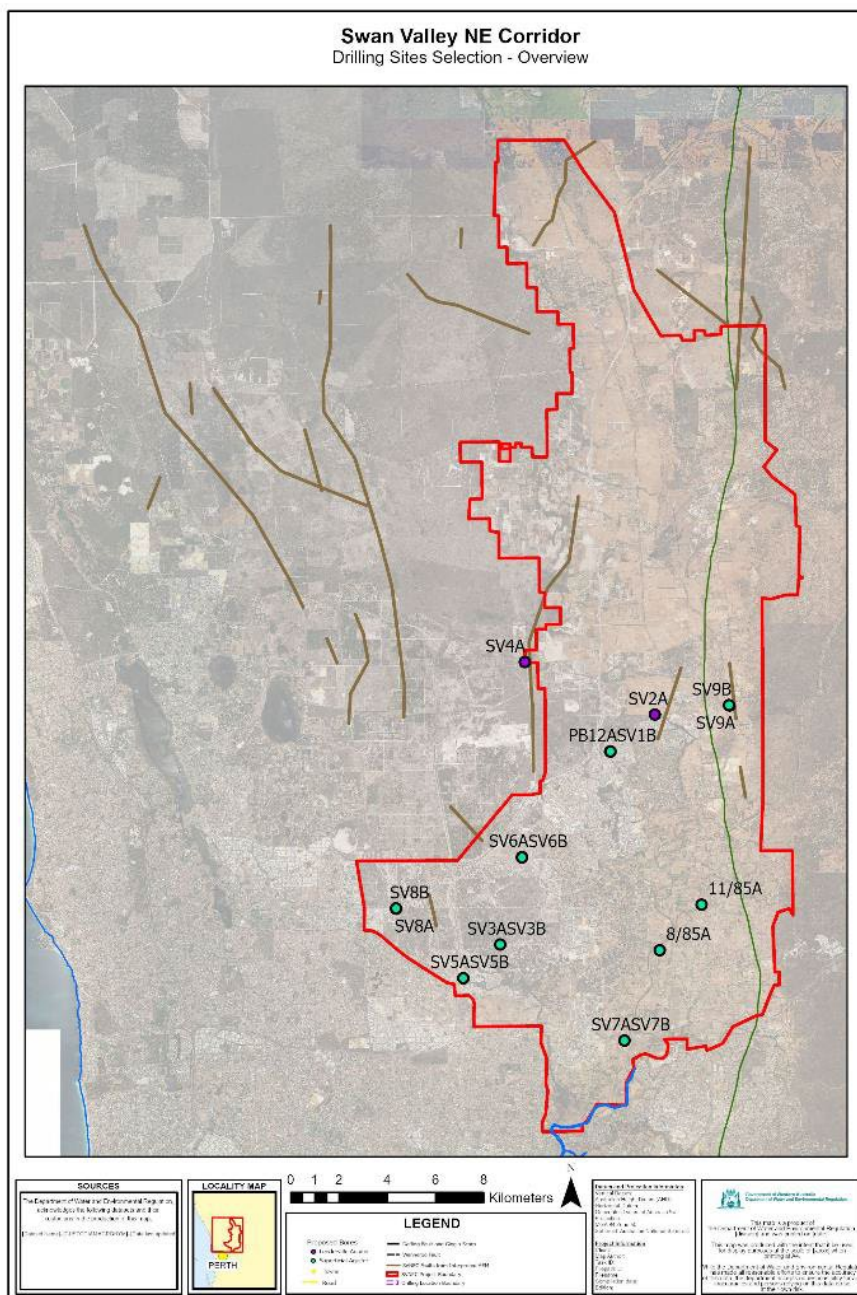


Figure 1: Location of proposed bore sites



Where possible drilling works will be carried out on previously cleared land, and existing tracks will be utilized to minimize the amount of clearing of vegetation. The removal of vegetation has been deliberately avoided in the planning phase and as such, it is not expected that any large vegetation is impacted from the works. Vegetation may be impacted by drilling personnel parking vehicles on and walking on groundcover or sprouting vegetation. Where required, a compacted pad of crushed limestone (approx. 150mm thick post compaction) will be laid to provide the drilling rig with safe and stable ground.

An area of 100 to 200 m² will be required around each bore site and where possible the clearing of vegetation will be avoided by using non-vegetated and any pre-existing cleared areas.

Details of the maximum potential clearing areas associated with the proposed bore sites are provided in Table 1 along with land details. Site locations and photographs of each site are shown in Figure 2 to Figure 5. Digital data of the proposed bore locations and clearing areas have also been provided as shapefiles.

It is important to note that the Department has overestimated the clearing for the purposes of this clearing permit. It is anticipated that clearing will be less given most of the bore sites have been chosen based on pre-existing cleared areas.

Communication and consultation is continuing with the landowners. Consent has been verbally obtained however, the Department is still awaiting some written approvals. These approvals will be sent through and updated when received.



Table 1: Details for clearing at proposed bore sites

Bore Name	Coordinates (GDA94, Zn50)		Estimated Clearing Area (m2)	Notes	LGA	Lot No.	Land Type
	X	Y					
SV3	399350.5	6478206.9	207.7	Previously heavily cleared, apparent vegetation on aerial is stockpiled debris, which will be pushed out of the area with a bobcat and levelled out for drilling. Included in case veg is growing in the stockpile.	City of Swan	D058914 1	Freehold Lot – Whiteman Park
SV4	400360.2	6489912.0	108.7	Some small grass trees in the area, which will be avoided. Bobcat to move previously stockpiled soil/debris from previous clearing for drilling (~1984). Sprouting grass trees may be impacted from walking and vehicles parking.	City of Swan	F 65	State Forest - DCBA
SV8	395026.7	6479701.4	116.3	Minor small vegetation which will not be removed, the area should not require levelling, veg may be impacted by drillers walking on it.	City of Swan	R 53277	Crown Reserve – Whiteman Park

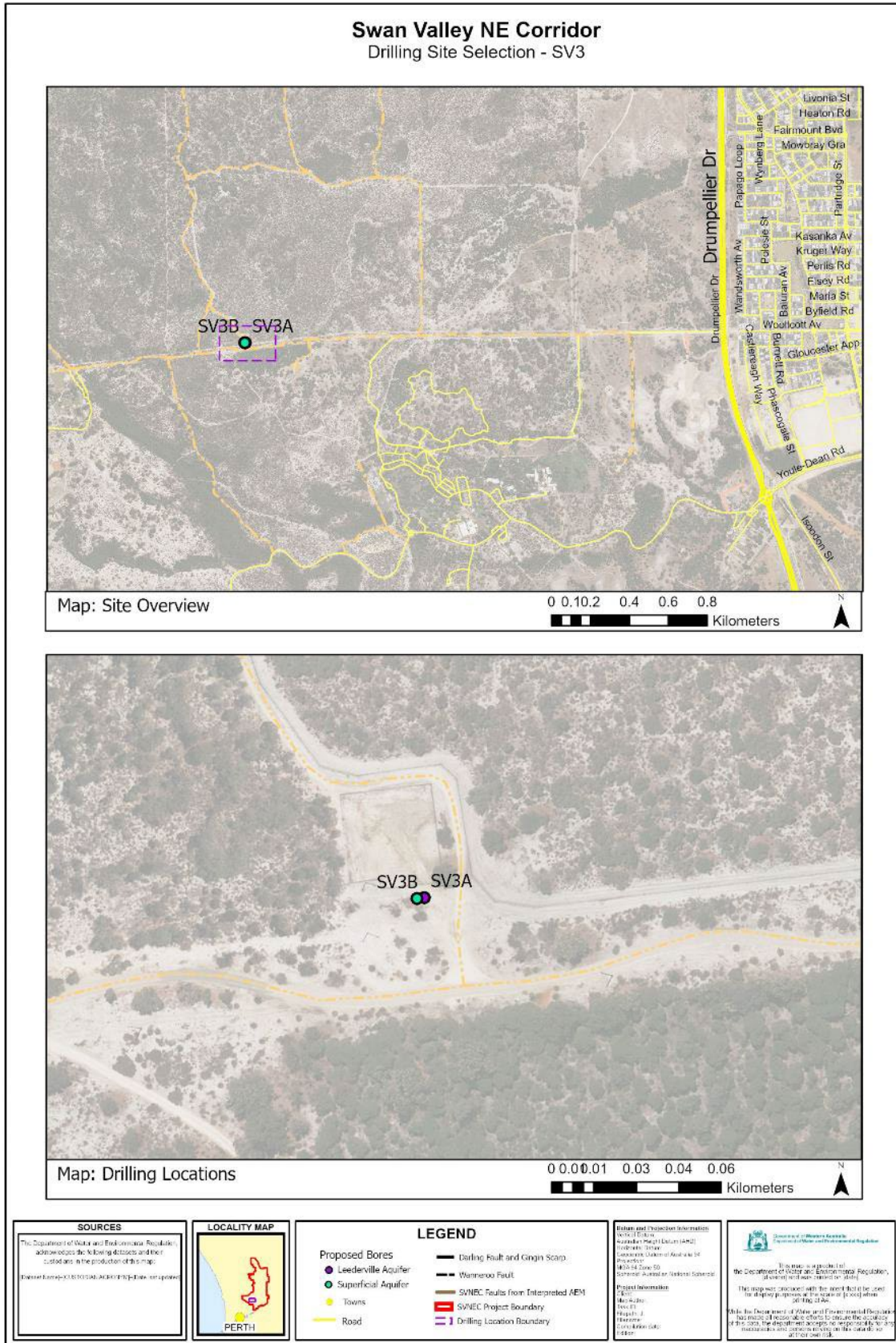


Figure 2a: Drilling site SV3



Figure 2b: Photographs of site SV3 (looking east then west)

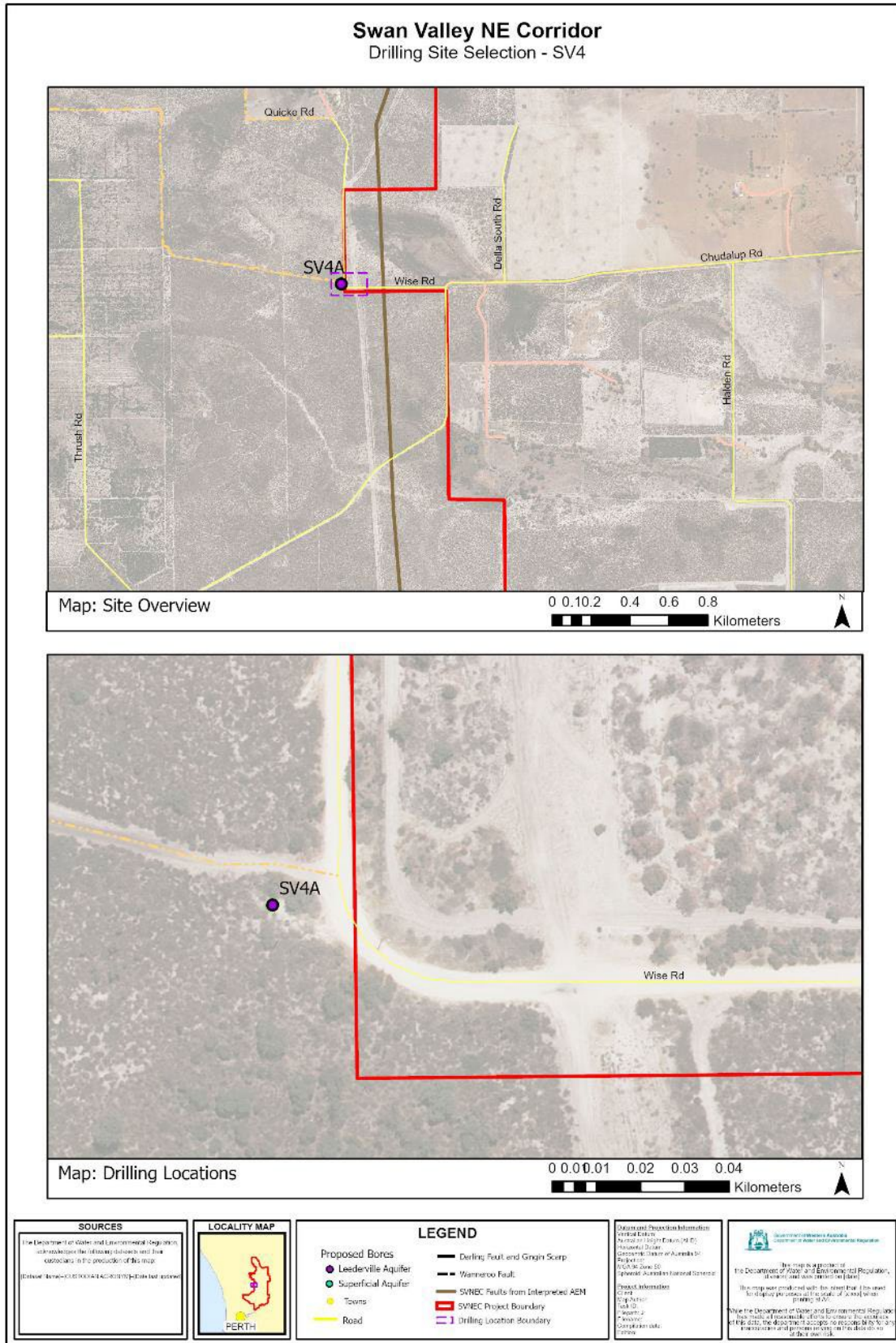


Figure 3a: Drilling site SV4



Figure 4b: Photographs of site SV4 (looking west and close up looking north)

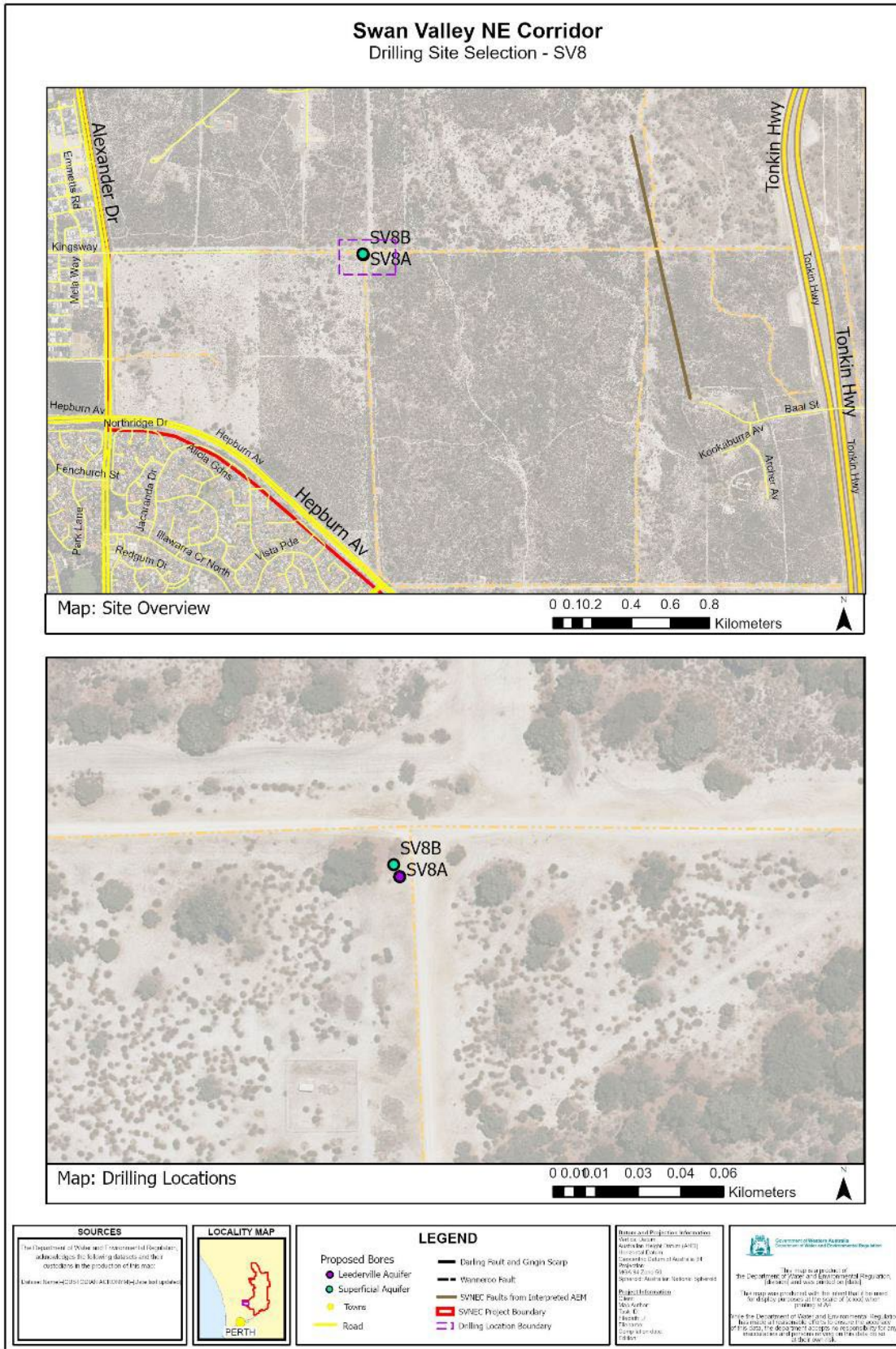


Figure 5a: Drilling site SV8



Figure 6b: Photographs of site SV8 (both looking south)