



Figure 1. Additional possible Corymbia tree for clearing in made reserve



Figure 2. Isolated Corymbia tree in existing made road reserve with grass understorey



Figure 3. Alignment of road extension across gully with *E rudis* over grass

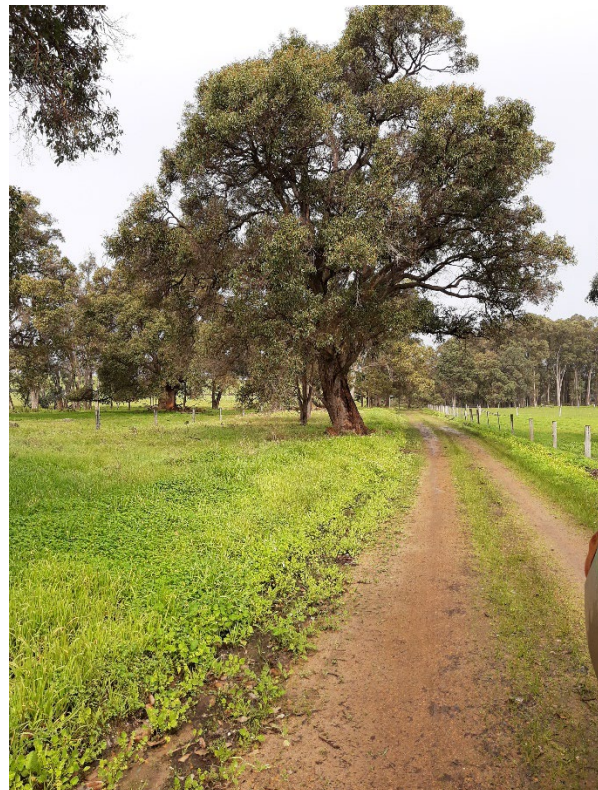


Figure 4. Isolated Corymbia trees over grass in made road reserve



Figure 5. Isolated Juncus clump on area of proposed crossing